

## ***A Word From Our Principal ...***

Kia ora koutou, Dobri dan, Bonjour, Hallo, Hola, Zdravstvuyte, Nǐn hǎo, Salve, Konnichiwa, Namaste, Guten Tag, Olá, Anyoung haseyo, Asalaam alaikum, Shwmae, G'day,

Our students have been reaching for the stars lately! Across the classrooms, our children are currently engaging in science lessons about space and absolutely loving it.

There have been some amazing experiments and observations made. It has been really pleasing to see how engaged and enthusiastic they are about the universe. Ask your child what their favourite space discovery was this week—you might just learn something new about the cosmos!

As the winter weather begins to set in, we are noticing a few more non-uniform items creeping into daily wear. We want to keep our school community looking sharp and feeling united.

- Check the Kit: Please ensure your child is wearing the correct uniform items each day.
  - Need an Upgrade? If your child has outgrown their uniform or needs new items, they can be purchased directly from DD Gold or through our PTA second-hand supply. Please text: 022 585 1790
- Thank you for your support in keeping our school standards high and our students warm.

We hope you all have a relaxing and safe weekend ahead. Enjoy your time with your whānau!

Ngā mihi,  
*Dr Sarah Brown*

# Afternoon Tea with the Principal

The Plough and Feather host a weekly Afternoon Tea with our Principal at their restaurant.

Each week, two children who consistently show amazing KORU kids values will join a member of the Senior Leadership Team to have afternoon tea.

Congratulations this week to: Michelle & Ngawai and Mia & Lily.



**20th/21st June**

40 Hour  
Challenge  
Weekend Yr5 &  
Yr6

**29th June**  
Board Meeting

**2nd July**  
Matariki Night  
5.30pm Start

**3rd July**  
Free Dress Day  
BOIAR Fundraiser  
(Gold coin  
donation)

*Please remember to advise the office by 2pm if there is a change to your child's bus schedule in the afternoons. This will help us ensure a smooth and efficient end of day.*

## Uniforms



New Uniforms  
Address  
59 Hobson Ave, Kerikeri  
78 Commerce St, Kaitaia  
PO Box 476 Kerikeri  
Email : logo@ddgold.co.nz

Tel 09 4071527 Kerikeri



## Lunch Orders

The Sushi Gallery in Kerikeri, accepts order and kindly delivers them each **Thursday** for lunch. Please go to: <https://sushigallerykerikeri.com/> and follow the online ordering system - please be sure to comment KKPS and your child's name and classroom.

PTA Secondhand Uniforms  
Text Only  
022 585 1790  
Include size and items  
required



You can order lunches that will be delivered each day for lunch. Tuckr is available on Kindo. There are lots of yummy options available.  
<https://www.kindo.co.nz/>



facebook

Keep in the loop with what's  
happening at Kerikeri  
Primary School



mykindo

For all school purchases or  
permissions please use the  
Kindo App



Hero

If you child is unwell or  
away, please let us know via  
the HERO App

**little dippers** **LITTLE DIPPERS SWIM SCHOOL AND AQUATIC CENTRE**  
All Levels | All Ages

# TERM 2 2026

Swimming Sessions from **22nd April until 4th July**

Excellence-recognised Teachers  
Award Winning Centre

**HAVE A FANTASTIC WINTER TERM OF SWIMMING AND WATER SAFETY – KEEP THOSE SKILLS STRONG EVEN IN THE COOLER MONTHS!**

**COLD WEATHER IS THE PERFECT TIME TO ENJOY A WARM, INDOOR HEATED POOL**

021501813  
littledippersswim@gmail.com  
84 Kapiro Road, Kerikeri 0294

**Te Tai Tokerau MANA AKE STRONGER FOR TOMORROW**

**Mana Ake Karakia:**  
E atawhai ana mātou  
Te whakāwhiri o ngā korokoro i nui māi  
E ngā māniri tāwari e tū ana māi āpōpō.  
Nā tōtōu kōtiro hāi owhi tā kōpapa,  
Nā māua eke tā tō tāwari tonu ai  
Kōwhiri ā, Hāi ā, Tāhā ā.

We nurture and protect the seeds sown near and far, so that they may grow into mighty tāwari for a nui ā tahi ātāri tomorrow. We embrace our responsibility to encourage students on a path of lifelong learning. *Unai! Together! Strong!*

**For more information about Mana Ake:**  
Contact: **Chloe Baker - Wyeth**  
Chloe.baker.wyeth@TeWhatuOra.govt.nz  
Phone: 021 784 919

Talk: to a member of staff at your child's school  
Visit: [www.northlandhb.org.nz/mana-ake](http://www.northlandhb.org.nz/mana-ake)  
Email: [manaake@northlandhb.org.nz](mailto:manaake@northlandhb.org.nz)

Supported by: **Te Whatu Ora**

**Tuning in to Kids®**  
**Tuning in to Kids**

**What is Tuning in to Kids?**

**What is the purpose of Tuning in to Kids?**

**Session information**

**Emotionally Intelligent Parenting**  
A six-session parenting program for parents of children aged 5 - 12yrs

Would you like to learn how to:

- Be better at talking to your child?
- Be better at understanding your child?
- Help your child learn to manage their emotions?
- Help to prevent behaviour problems in your child?
- Teach your child to deal with conflict?

Tuning in to Kids® shows you how to help your child develop emotional intelligence.

Children with higher emotional intelligence:

- Have greater success with making and keeping friends
- Have better concentration at school
- Are more able to calm down when upset or angry
- Tend to have fewer childhood illnesses

Date - 7/06/2026 - 1/06/2026  
9:30am - 10:30am (Thurs)  
Venue - Cromahoe School  
Contact - Chloe Baker-Wyeth  
Phone - 021 784 919

You can contact Mana Ake at - our website: [www.northlandhb.org.nz/mana-ake](http://www.northlandhb.org.nz/mana-ake) by email: [manaake@tewhatuora.govt.nz](mailto:manaake@tewhatuora.govt.nz)

Mana Ake - Stronger For Tomorrow [www.northlandhb.org.nz/mana-ake](http://www.northlandhb.org.nz/mana-ake)

**Kerikeri HOLIDAY PROGRAMME**

Northland FC Junior Holiday Programme!

School Holiday Football Camp for ages 7-14 running from 9am - 3pm. Fun, friends, skill-building, and confidence all in one, with limited spots available. Sign up via the link - <https://northlandfc.friendlymanager.com/public/register?form=17&pre=>

AGE	7 - 14 YEARS
LOCATION	BAYSPORT WAIPAPA
FEE	\$60 PER CHILD
DATES	6, 7 <sup>th</sup> JULY

**PAK&SAVE** **Speedy Signs** **holarintz** **McDonald's** **The Holmes Clinic** **DebtManage**

**BOI KIDS CAMP**  
29 JUNE - 17 JULY HOLIDAY PROGRAMME  
Springbank School • Ages 5-13

7:30AM - 5:30PM **\$50 PER DAY**  
8:00AM - 3:30PM **\$45 PER DAY**

**WEEK 2**

<b>MON 6 JULY</b> MULTI-SPORT MASHUP	<b>TUE 7 JULY</b> CAPTURE THE FLAG	<b>WED 8 JULY</b> BASKETBALL BATTLE	<b>THU 9 JULY</b> RUGBY RUMBLE	<b>FRI 10 JULY</b> MATARIKI PUBLIC HOLIDAY
---	---------------------------------------	--	-----------------------------------	---

**WEEK 3**

<b>MON 13 JULY</b> STRIKE & SCORE	<b>TUE 14 JULY</b> DODGEBALL ARENA	<b>WED 15 JULY</b> CLIMBING ADVENTURE	<b>THU 16 JULY</b> FOOTY FRENZY	<b>FRI 17 JULY</b> CAMP CHAMPIONS
--------------------------------------	---------------------------------------	--	------------------------------------	--------------------------------------

**BOOK NOW!**  
021 024 46969 | [info@boikidscamp.co.nz](mailto:info@boikidscamp.co.nz)  
Active Kids • Fun Challenges • Great Memories!

## EXTENDED PHARMACY SERVICE OFFERED HERE

### Get help from your pharmacist for common health conditions

Pharmacies can support you and your whānau with:

- ✔ Pain and fever (children)
- ✔ Dehydration (oral rehydration)
- ✔ Conjunctivitis (pink eye)
- ✔ Head lice
- ✔ Scabies
- ✔ Urinary tract infections (UTIs)
- ✔ Emergency contraception

#### What does it cost?

Service	Eligible people	Community Services Card	No Community Services Card
Pain & fever	Children under 14	\$5	\$20
Oral rehydration	Children under 14	\$5	\$20
Conjunctivitis	Children over 2 years and under 14 years	\$5	\$20
Head lice	Children under 14 and eligible whānau	\$5	\$20
Scabies	Children under 14 and eligible whānau	\$5	\$20
Emergency contraception	Women under 25	FREE	FREE
Uncomplicated UTI	Women 16–65 years	\$5	\$20

#### Additional medicine charges may apply

Some funded treatments supplied under the Extended Pharmacy Service may also have a prescription co-payment:

**\$0**

- Children under 14 years
- Community Services Card holders
- Emergency contraception supplied through EPS

**\$5**

- Some funded medicines supplied to patients who do not qualify for a prescription co-payment exemption.



#### Ask our pharmacy team if you are eligible

Your pharmacist will assess your symptoms and advise the most appropriate treatment, self-care advice, or referral.



PHARMACY GUILD OF NEW ZEALAND



Access resources, guides and templates  
Scan the QR code or visit:  
[pgnz.org.nz/pharmacy-practice-resources](http://pgnz.org.nz/pharmacy-practice-resources)

# QUAD SPORT HOLIDAY CAMP!

**Tennis, Pickleball, Football & Table Tennis...**  
**...PLUS BIG SCREEN WORLD CUP FOOTBALL MATCHES!!**

**WEEK 1: 6-10 JULY**  
**WEEK 2: 13-17 JULY**

**9am - 2pm**

- Heaps of fun to be had on and off court.
- Spot prizes throughout the week.
- Games across all 4 sports, with ITF tennis coach Guy.

**ONLY \$50**

Pay up front to secure your spot, and get your **5th day FREE.**

**FOR BOOKINGS CONTACT GUY:**  
**CALL: 021 024 22117** **EMAIL: [guy@tuitennis.nz](mailto:guy@tuitennis.nz)**

Please remember to advise the office by 2pm if there is a change to your child's bus schedule in the afternoons. This will help us ensure a smooth and efficient end of day.



## Brainwave Trust Wānanga / Parenting Workshops

Please click on the dates below for  
more information

[29 April + 24 June](#)

[27 May](#)

[24 June](#)

[July 2026 - Date to be confirmed](#)

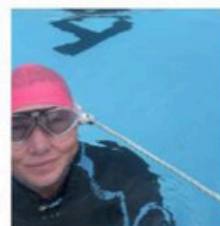


*Tiakina te Tamaiti*  
Helping Our Tamariki Thrive



**THE BIG SWIM** 20  
26

**Diving In for a Great Cause: Help whaea Crystal Support Coastguard!** This June, [our very own whaea Crystal is taking on **The Big Swim** challenge to raise vital funds for Coastguard Tautiaki Moana. She will be hitting the pool to swim a massive total of 40 kilometres across the month! Every dollar raised goes directly toward training and equipping Coastguard's 2,000+ volunteers, and keeping their rescue vessels fueled and ready to save lives on our oceans, lakes, and rivers. If you would like to support whaea Crystal's epic 40km challenge and help keep Kiwis safe on the water, please visit her fundraising page to make a donation, scan the QR code.  
Thank you for your support!



SCAN ME



## Room 21: Meeting with our BuddyClass

Ms Hooper

Room 21 is lucky enough to be a 'buddy class' with Matua Rupert and the students from Pukeko ( Room 27). We meet every few weeks to learn new games and waiata, practise our te reo Māori and to have some fun getting to know each other better. This week we were learning action words as part of a fun waiata we learnt.  
'peke' - jump, 'whiu' - throw hurihuri - turn, takahi -stamp and 'whana' - kick

Then we practiced meeting & greeting each other, and asking each other how we were feeling...



Kia ora,  
Kō wai tō ingoa?  
E pēhea ana koe?

**Back in Room 21** - Over the past couple of weeks we have been busy writing speeches and persuasive letters to ask our parents for things we REALLY deserve ! 😊  
We have also been reading quite a lot about our Solar System, and now we know just how lucky we are to live on Earth !  
Last, but not least, we have created lots of interesting art that links with our SPACE theme. Some of it digital, and some of it using pastels, chalk and coloured markers.

